

VALLEY SPECIALTY CENTER



Report to the
Health & Hospital
Committee

May 23, 2002

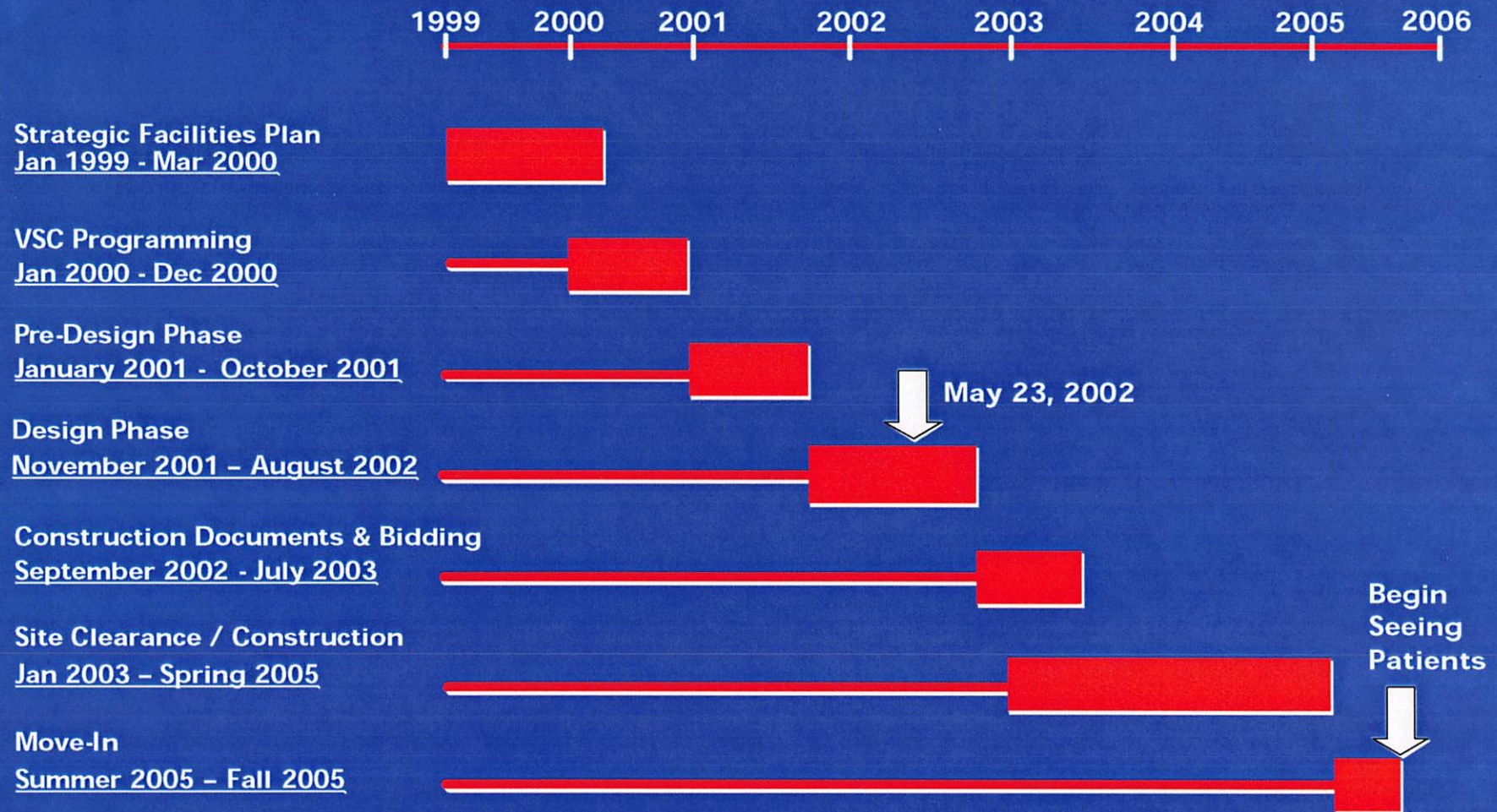
ANSHEN+ALLEN

DESCRIPTION

- Multi-specialty care center including outpatient clinics, special procedure areas, diagnostic services, and physicians' offices
- Replacing the inadequate and scattered existing Outpatient Department with expanded, operationally efficient space in a state-of-the-art facility
- Located near the corner of Moorpark and South Bascom Avenues
- Five floors plus basement – 234,000 square feet
- Scope includes VSC building, tunnel link to new Main Hospital, connection to and expansion of central plant, medical equipment and furniture
- \$ 93.8 million total project budget, with \$9.4 million authorized to date



SCHEDULE



Valley Specialty Center

May 23, 2002 / Page 2

ANSHEN+ALLEN

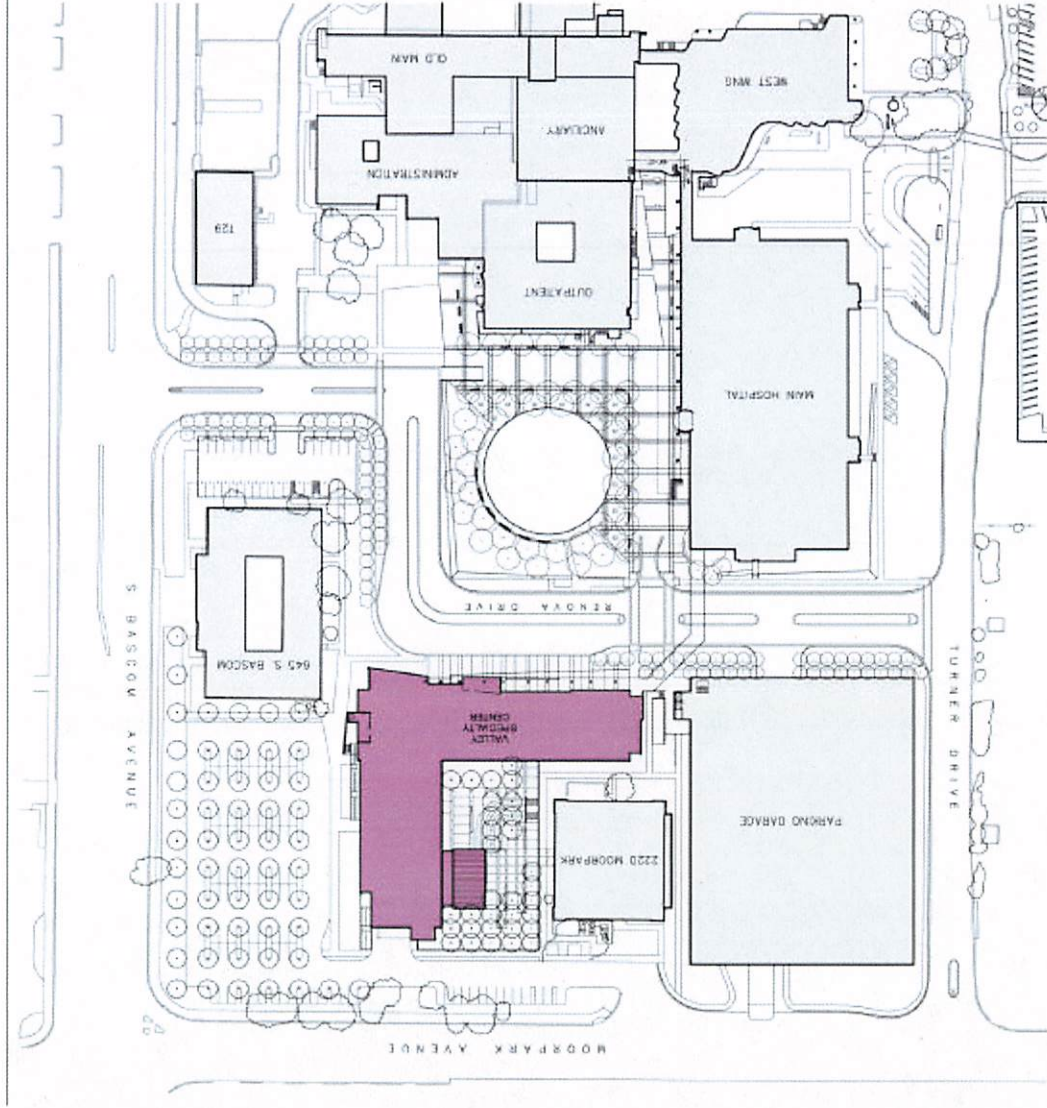
VISION

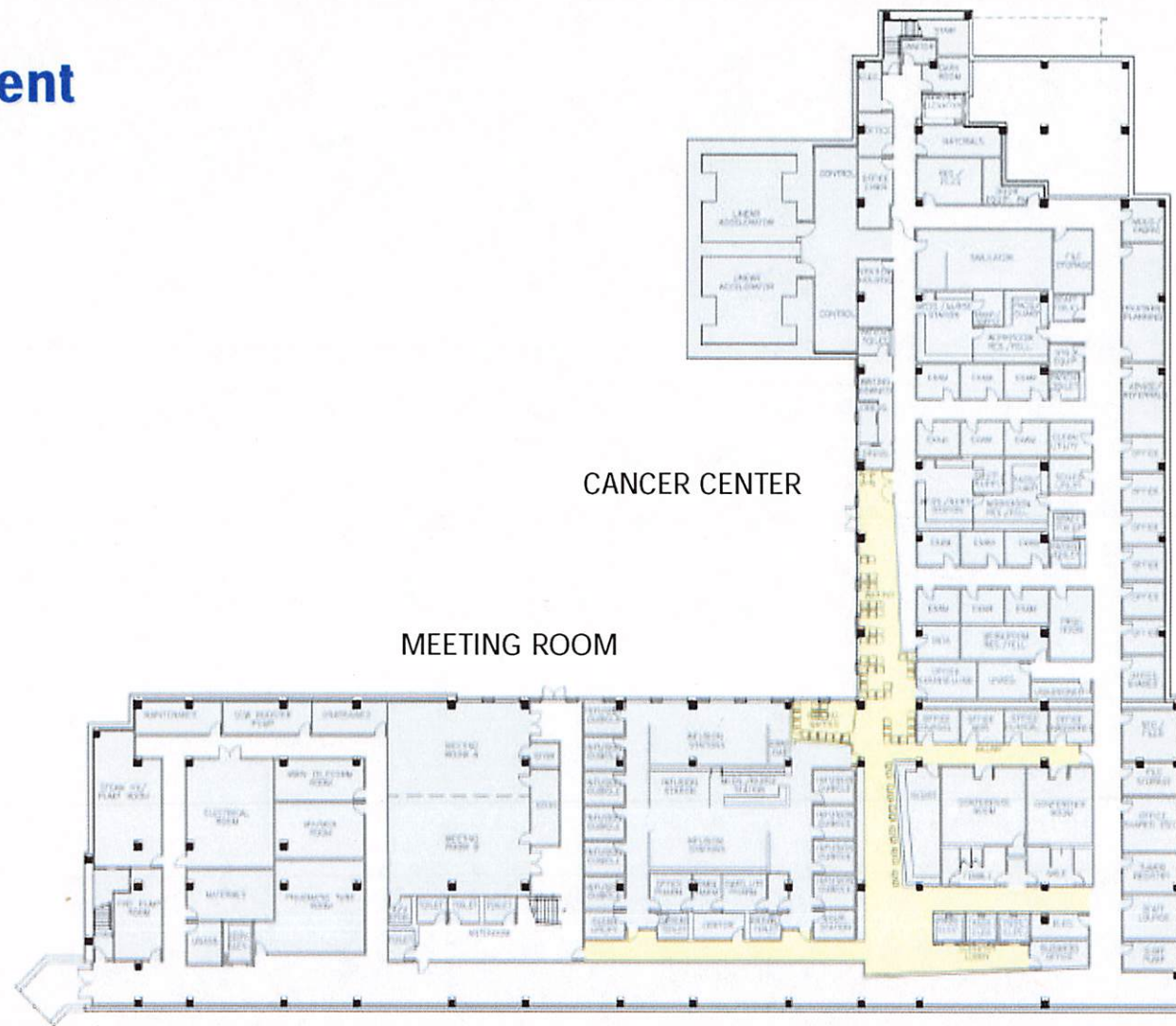
- Make Patients the Highest Priority
- Provide an Excellent Facility for Specialty Services
- Create Centers of Excellence
- Support Cost-Effective Care Delivery
- Allow for Each Specialty Service to be Available Every Day
- Work Well for Patients and Staff
- Complement the Main Hospital Building





Campus Plan

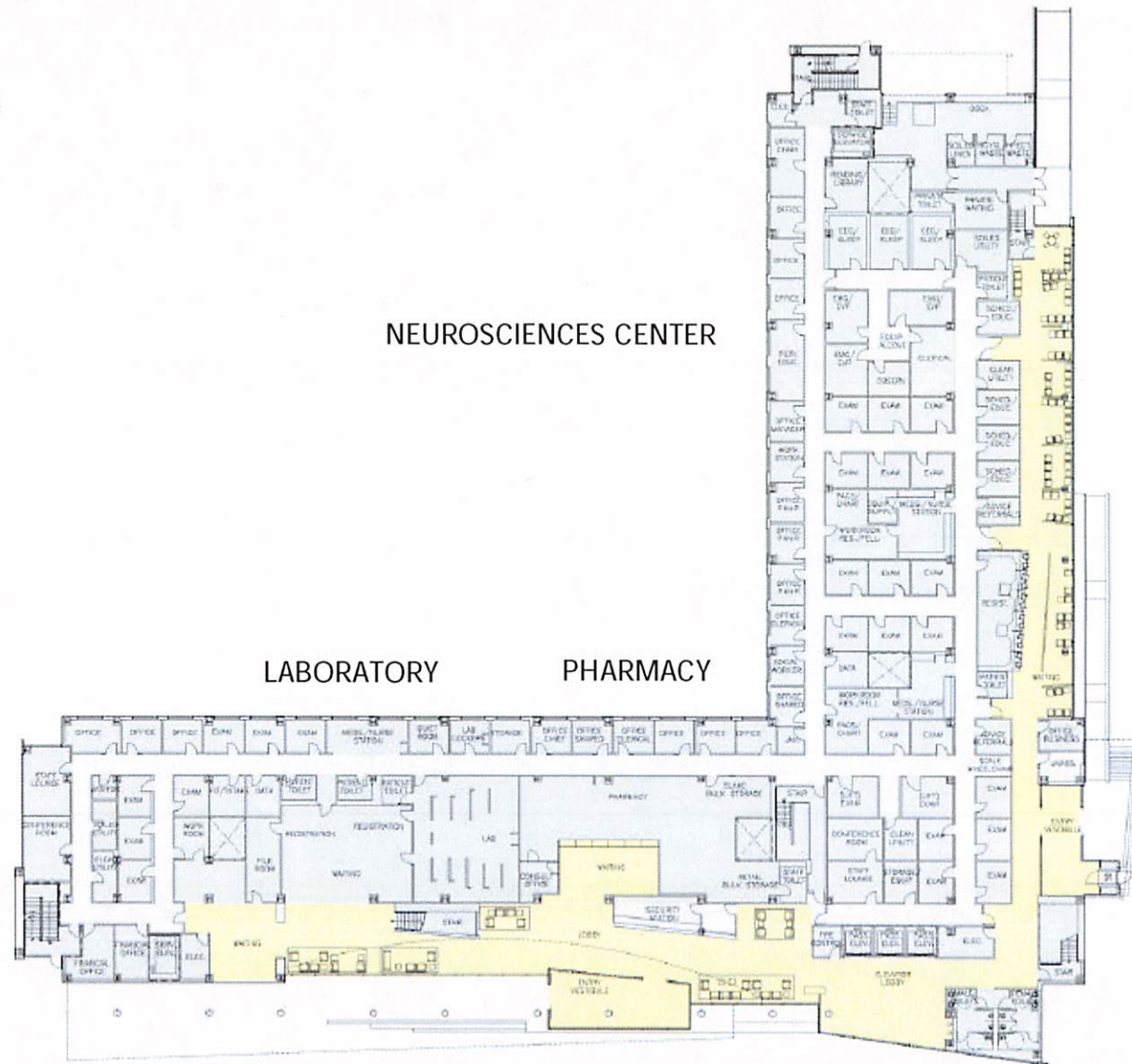




May 23, 2002 / Page 5

ANSHEN+ALLEN

First Floor

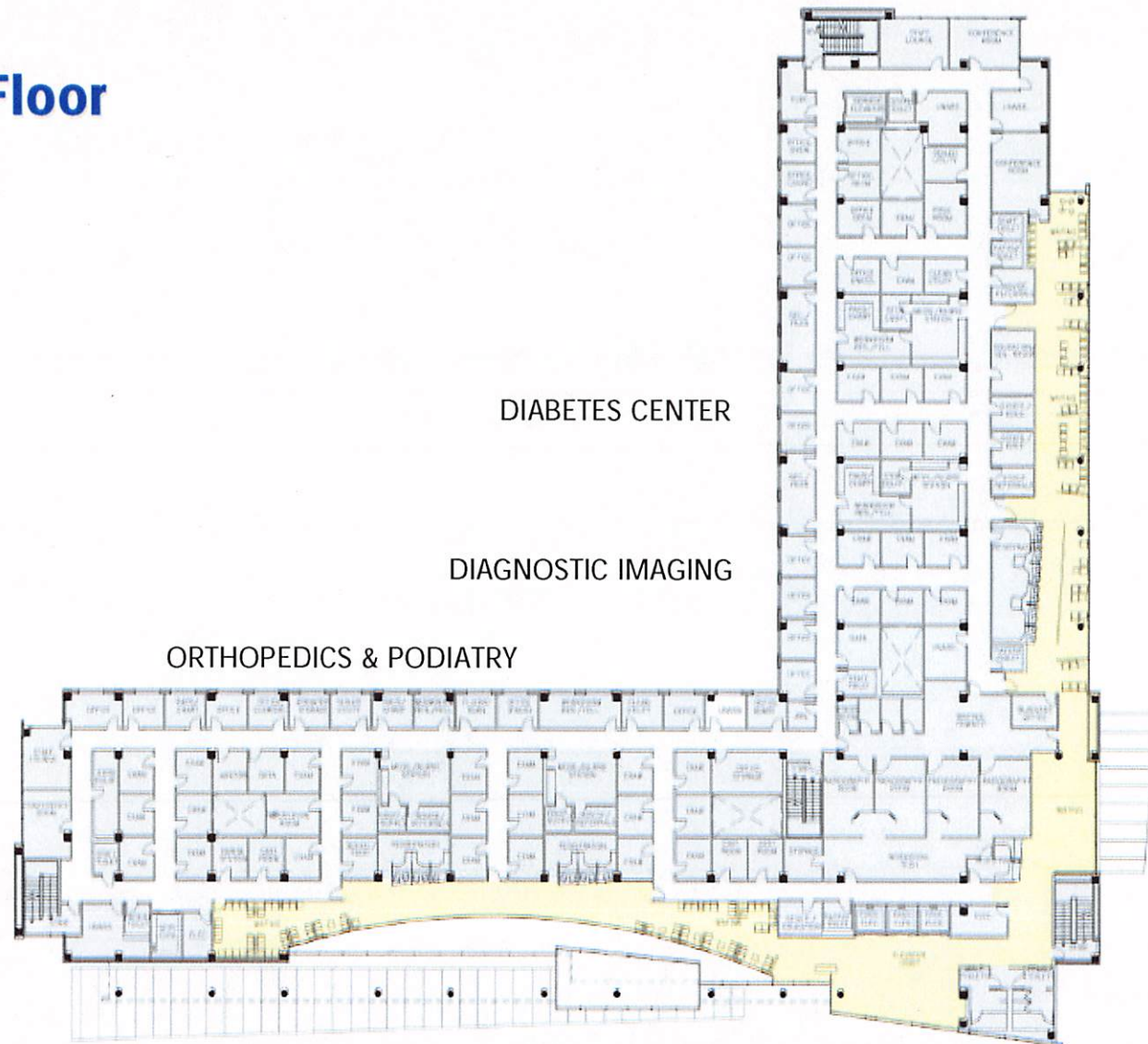


Valley Specialty Center

May 23, 2002 / Page 6

ANSHEN+ALLEN

Second Floor



Valley Specialty Center

May 23, 2002 / Page 7

ANSHEN+ALLEN

Third Floor



Valley Specialty Center

May 23, 2002 / Page 8

ANSHEN+ALLEN

Fourth Floor

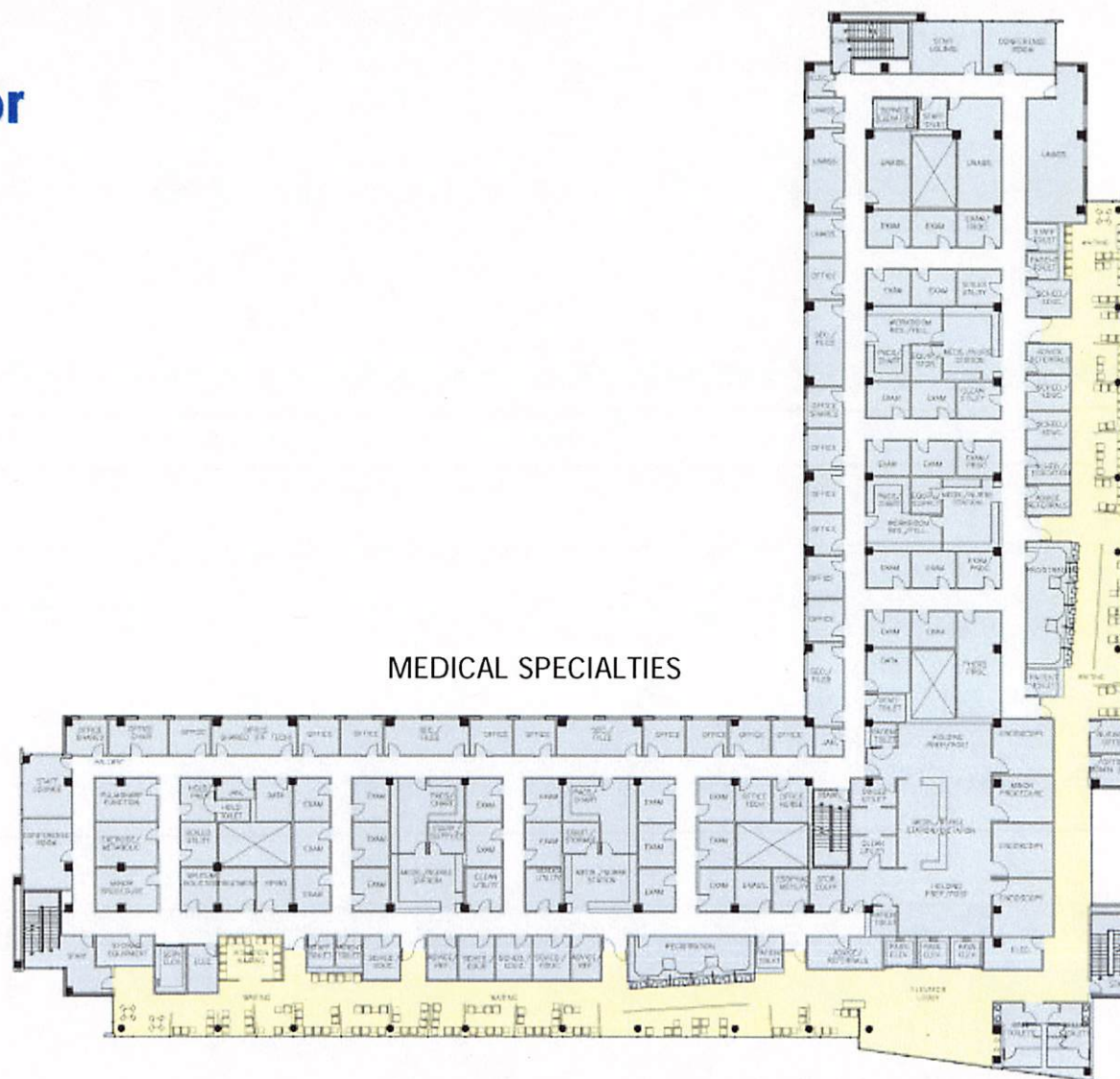


Valley Specialty Center

May 23, 2002 / Page 9

ANSHEN+ALLEN

Fifth Floor



Valley Specialty Center

May 23, 2002 / Page 10

ANSHEN+ALLEN



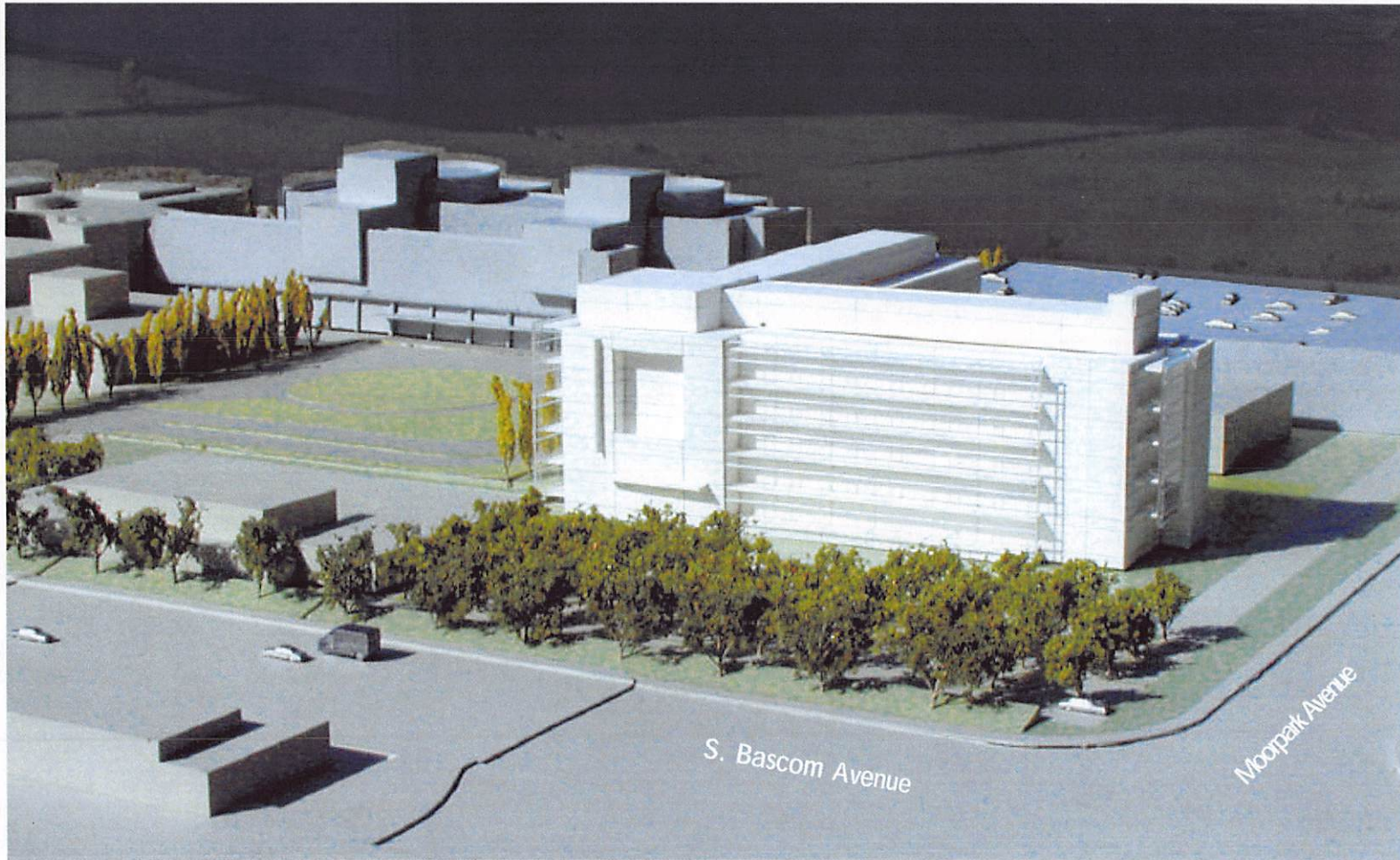
Aerial View of Campus Model



Valley Specialty Center

May 23, 2002 / Page 11

ANSHEN+ALLEN



Corner of South Bascom and Moorpark



Valley Specialty Center
May 23, 2002 / Page 12

ANSHEN+ALLEN

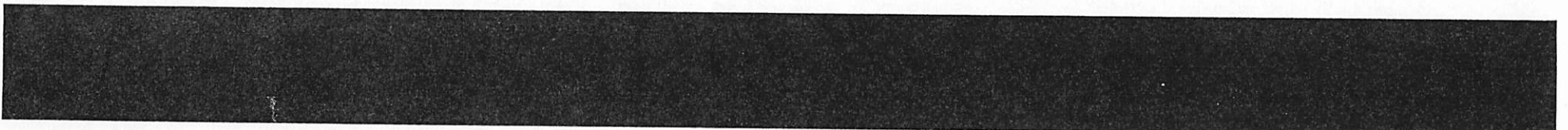
Medical Office Building

(Valley Specialty Center)

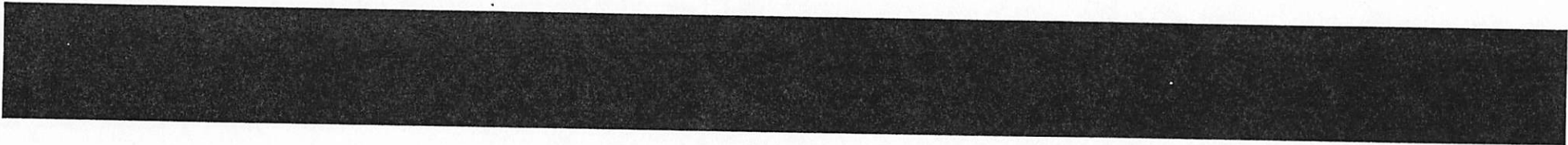
Report to the Health & Hospital Committee

October 17, 2001

9



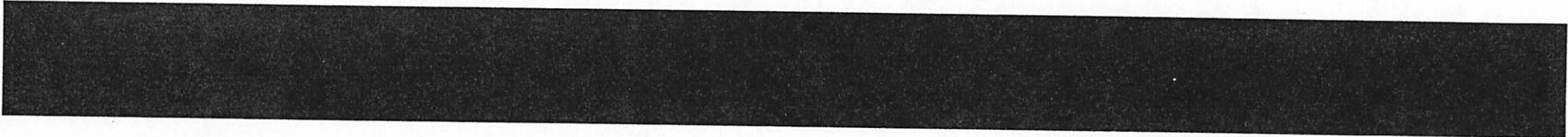
Project Description

- A multi-specialty care center including outpatient clinics, special procedure areas, diagnostic services, and physicians' offices
 - Over 250,000 patient visits annually
 - Replace the inadequate and scattered existing Outpatient Department with an expanded and operationally efficient space in a state-of-the art facility
 - Located at the corner of Moorpark Avenue and South Bascom Avenue
- 

Project Description

- The program currently includes:
 - 203 exam and procedure rooms
 - 234,500 SF
 - Basement plus five floors
- Total project budget \$93.8 million, with \$9.4 million authorized to date
 - Project costs are currently being estimated to verify that the total program fits within the approved budget
 - Potential budget concerns include medical equipment, connection to central plant, and extent of site development
 - Budget concerns could lead to reducing building size

Vision Statement

- Make Patients The Highest Priority
 - Provide An Excellent Facility For Specialty Care
 - Create Centers Of Excellence
 - Support Cost-Effective Care Delivery
 - Allow For Each Specialty Service To Be Available Every Day
 - Work Well For Patients And Staff
 - Complement The Main Hospital Building
- 

Schedule/Status

Strategic Facilities Plan
Completed Jan 1999 / Mar 2000



MOB Programming
Completed Jan 2000 / Dec 2000



Pre-Design Phase
July 2001 / October 2001



Oct 17, 2001



Design Phases
November 2001 / July 2002



Construction Documents
August 2002 / January 2003



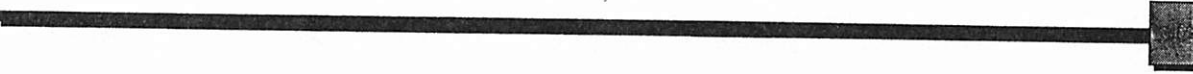
Site Clearance
Late 2002 / Early 2003



Construction
Spring 2003 / Spring 2005

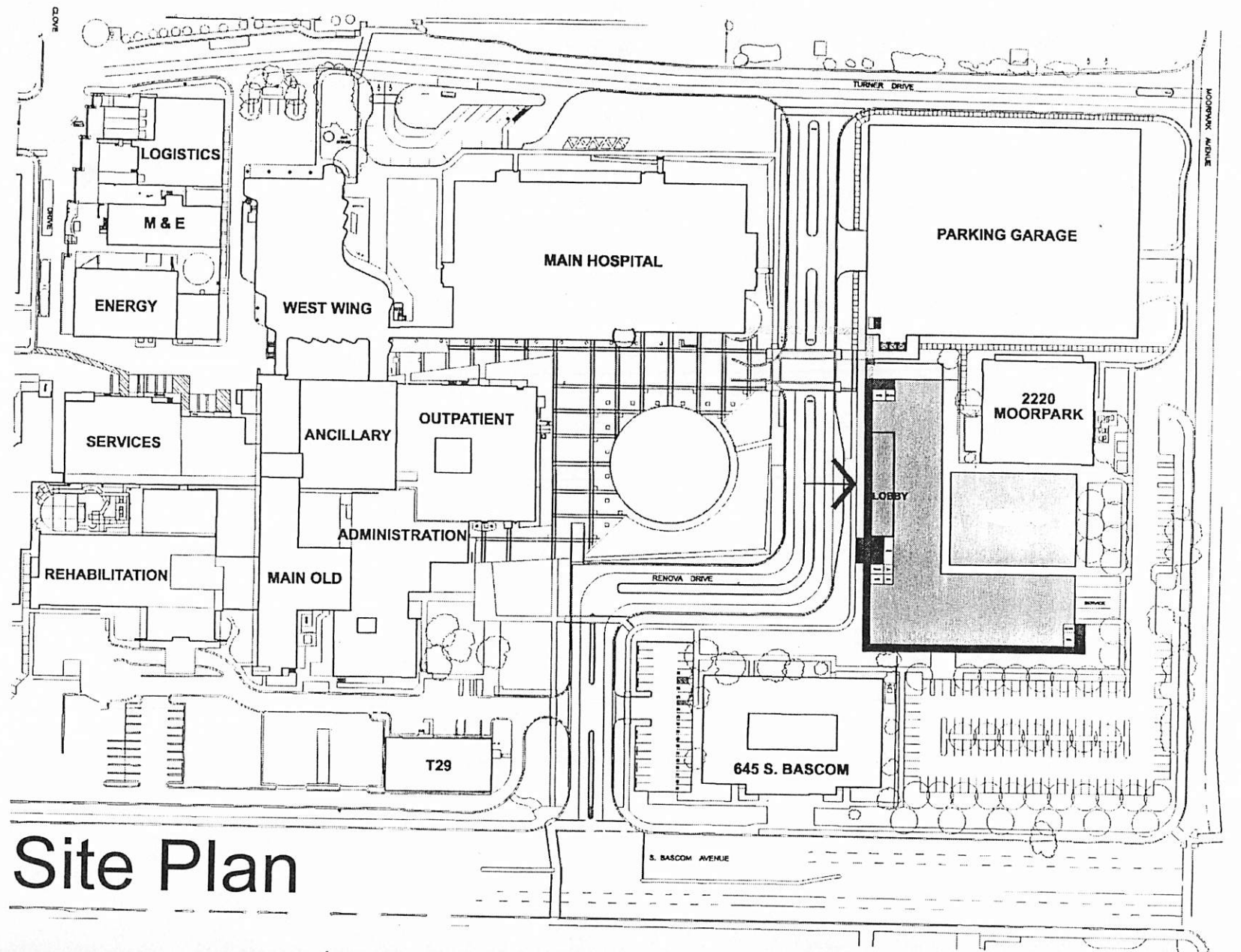


Move-In
Summer / Fall 2005

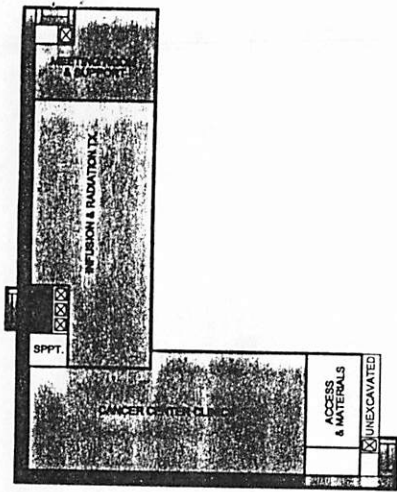


Begin Seeing Patients
Late 2005

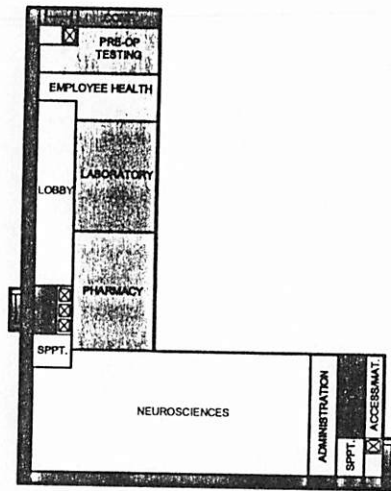




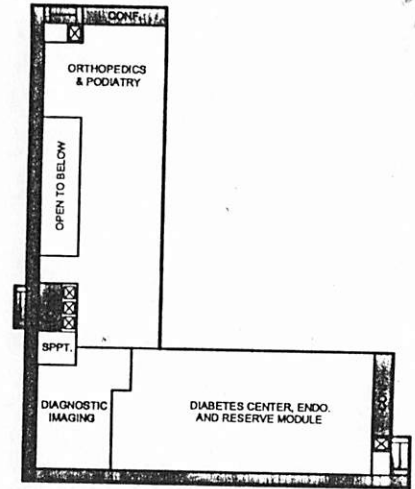
Site Plan



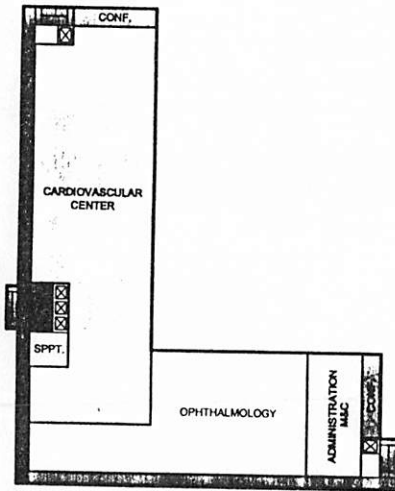
G



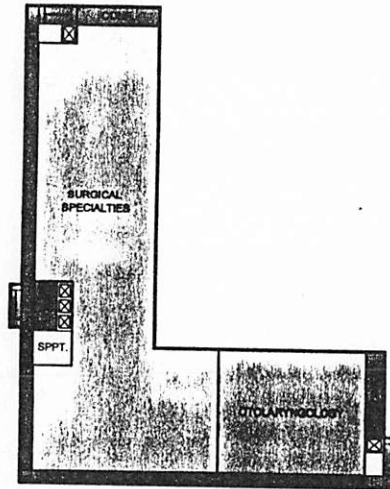
1



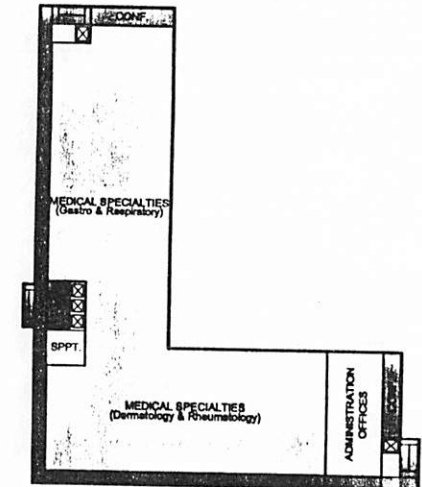
2



3



4



5

Block Planning