



Santa Clara County
April 11, 1969

Volume 5 — Number 15

MEET YOUR SANTA CLARA COUNTY BOARD OF SUPERVISORS

GENERAL — Santa Clara County is governed by a Board of Supervisors through the jurisdiction and powers granted to it by the Constitution and laws of the State and by the County Charter. The Board exercises both the legislative and executive functions of County government. Its executive responsibilities are discharged through the County Executive, an appointee of the Board.

POWERS AND FUNCTIONS — The Board of Supervisors passes ordinances and resolutions which apply either to the entire County or specifically to the unincorporated areas of the County. It adopts an annual budget for County government, sets County tax rates, and may authorize bond elections and sales subject to approval by the voters. The Board is empowered to create and control specific districts in unincorporated areas for such matters as rural fire protection, cemetery maintenance, roads, lighting, water importation, sanitation and other essential services. It appoints numerous advisory committees, commissions, and special boards to advise and assist in the administration of the multitude of matters pertaining to County government. It establishes policies governing the operations of the various departments and agencies of the County government. The Board of Supervisors exercises budgetary control over the Santa Clara County Flood Control and Water District Board.

ELECTION — The County is divided into five Supervisorial Districts, as shown on the map on Page 3, each District being represented by one Supervisor on the Board. A Supervisor is elected to office by the voters in his Supervisorial District. Tenure of office is four years. To be eligible for election, a candidate must have been a qualified voter of his district for at least two years. To provide for continuity of the Board as a whole, no more than three Supervisorial seats are subject to election in any one County general election. As a vacancy occurs, the remaining Board members fill the vacancy until the next general election by appointment of a qualified voter from the district concerned.

BOARD MEETINGS — Starting April 1, 1969 the Board will meet at 9:30 a.m. each Tuesday and the second and fourth Wednesday of each month. Persons wishing to have items of business considered by the Board must submit their requests to the Clerk of the Board by 5 p.m. of the Wednesday prior to the Tuesday meeting.



HONORABLE SIG SANCHEZ

Chairman of the Board
District One

(Southern Santa Clara County, Los Gatos, Monte Sereno, sectors of
San Jose including Almaden, Edenvale and Cambrian Park.
About 65 per cent of total county land area).

Board member since 1963. Previously Gilroy mayor, city councilman, 9 years. Native of Hollister. Has ranching interests. Operates warehousing firm in Gilroy. Director of Gilroy Telephone Co. Will become president of County Supervisors Assn. of California in 1970. Has extensive background involving water projects, including South Bay Aquaduct and Pacheco Pass water importation project. Board Liaison with County Planning Commission.



HONORABLE DOMINIC CORTESE

District Two

(Willow Glen, Southeast San Jose, San Jose south of Taylor St.)

Bachelor of Science degree, University of Santa Clara, 1954. First Lieutenant, U.S. Army, 1954-56. Self-employed in farming and business properties. Member of board of directors of Ass'n of Metropolitan San Jose, East Side Co-op Sunsweet Growers, California Cannery and Growers, and Apricot Producers of California.

HONORABLE CHARLES QUINN

District Three

(North San Jose, Milpitas, Agnew, Alviso, Sunnyvale, sectors of north Santa Clara).

Appointed to the board in 1965. County planning commissioner 1960-64. Former member of county grand jury. Background in finance, property management and ranching. Has real estate and property management office in San Jose. Board representative to San Francisco Bay Conservation and Development Commission, County Water Commission, Solid Waste Disposal Committee, Joint County-San Jose Planning Committee.



HONORABLE RALPH MEHRKENS

District Four

(Santa Clara, Campbell, Saratoga, sectors of west San Jose).

Appointed to the board in 1960. Extensive background in business and commerce. World War II Lieutenant Commander, Navy Supply Corps. Naval Reserve until 1963. Board liaison with area and regional governmental confederations. Board representative to Inter-city Council, Association of Bay Area Governments, County Planning Policy Committee. Member of California Legislature advisory committee studying Bay Area regional organization to insure proper planning and development.

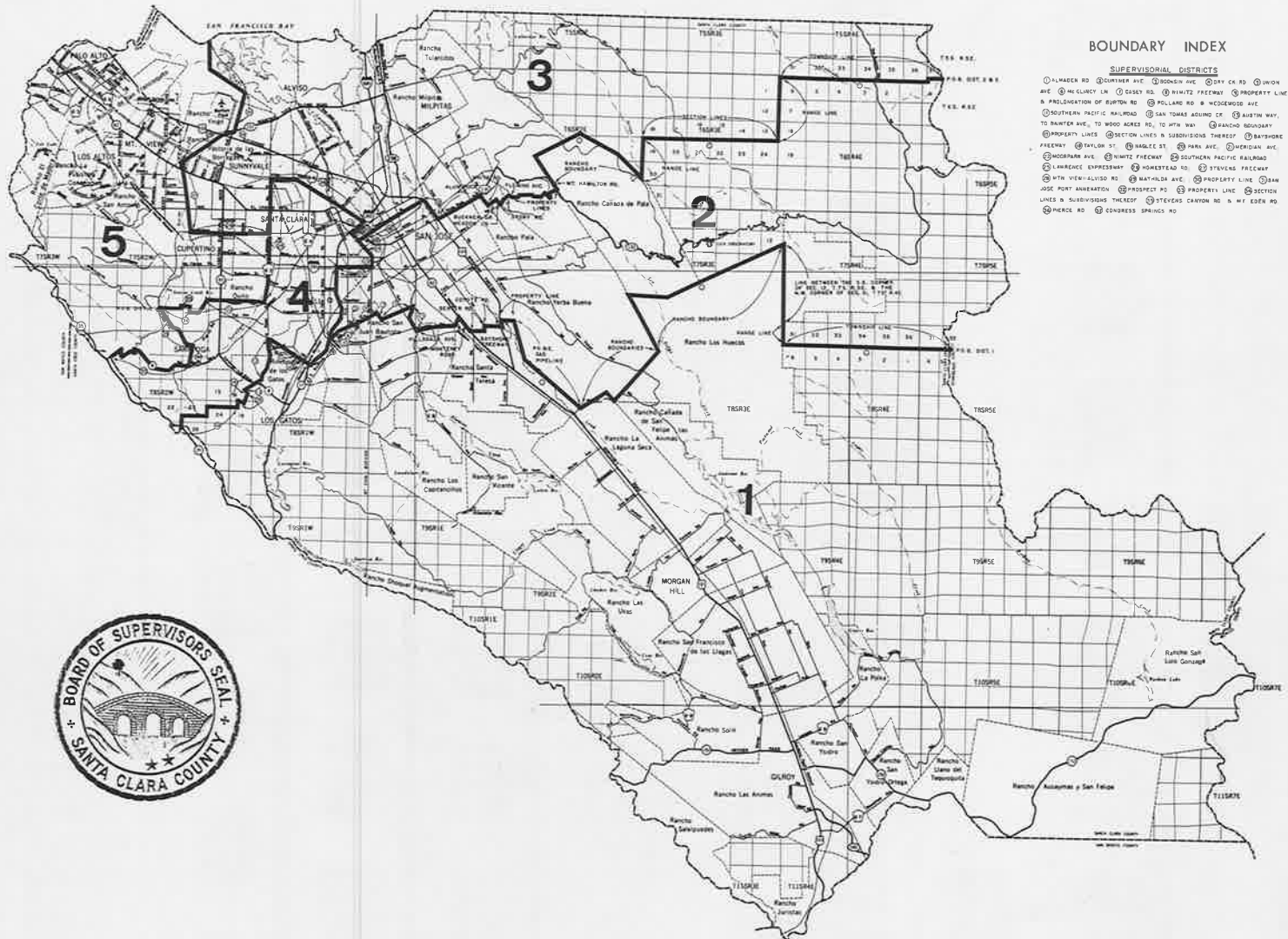
HONORABLE VICTOR CALVO

District Five

(North Santa Clara County, Palo Alto, Mountain View, Los Altos, Los Altos Hills, Cupertino, westernmost sector of San Jose).

Santa Clara County native. Bachelor of Science, Stanford University. World War II Army Air Force pilot. Mountain View mayor, councilman, planning commissioner for 11 years. Board member since 1969. Partner, Mountain View and Cupertino lumber company.





BOUNDARY INDEX

SUPERVISORIAL DISTRICTS

① ALVARADO RD. ② CLINTON AVE. ③ BODEN AVE. ④ DRY CR. RD. ⑤ UNION AVE. ⑥ MCCLINTY LN. ⑦ CASSY RD. ⑧ RIVINGTON FREEWAY ⑨ PROPERTY LINE & PELLERIN RD. ⑩ EIGHTH ST. ⑪ HILLMAN RD. ⑫ WILSON RD. ⑬ SOUTHERN PACIFIC RAILROAD ⑭ SAN JOAQUIN AVE. ⑮ BAYVIEW WAY. ⑯ BAYVIEW AVE. ⑰ WOOD ACRES RD. ⑱ MTH WAY. ⑲ RANCHO BOUNDARY. ⑳ PROPERTY LINE ㉑ SECTION LINES & SUBDIVISIONS THEREOF ㉒ BAYSHORE FREEWAY ㉓ EIGHTH ST. ㉔ HILLMAN RD. ㉕ HAN AVE. ㉖ HERDAN AVE. ㉗ WOODMAN AVE. ㉘ NINTH FREEWAY ㉙ SOUTHERN PACIFIC RAILROAD ㉚ LAWRENCE EXPRESSWAY ㉛ HOMESTEAD RD. ㉜ STEVENS FREEWAY ㉝ MTH VENTURA RD. ㉞ MATHILDA AVE. ㉟ PROPERTY LINE ㊱ SAN JOSE PORT ANTERATION ㊲ PROSPECT RD. ㊳ PROPERTY LINE ㊴ SECTION LINES & SUBDIVISIONS THEREOF ㊵ STEVENSON CANYON RD. ㊶ MTH EDEN RD. ㊷ MERCER RD. ㊸ SPRING SPRINGS RD.



LEGEND

— ○ — BOUNDARY OF SUPERVISORIAL DISTRICTS

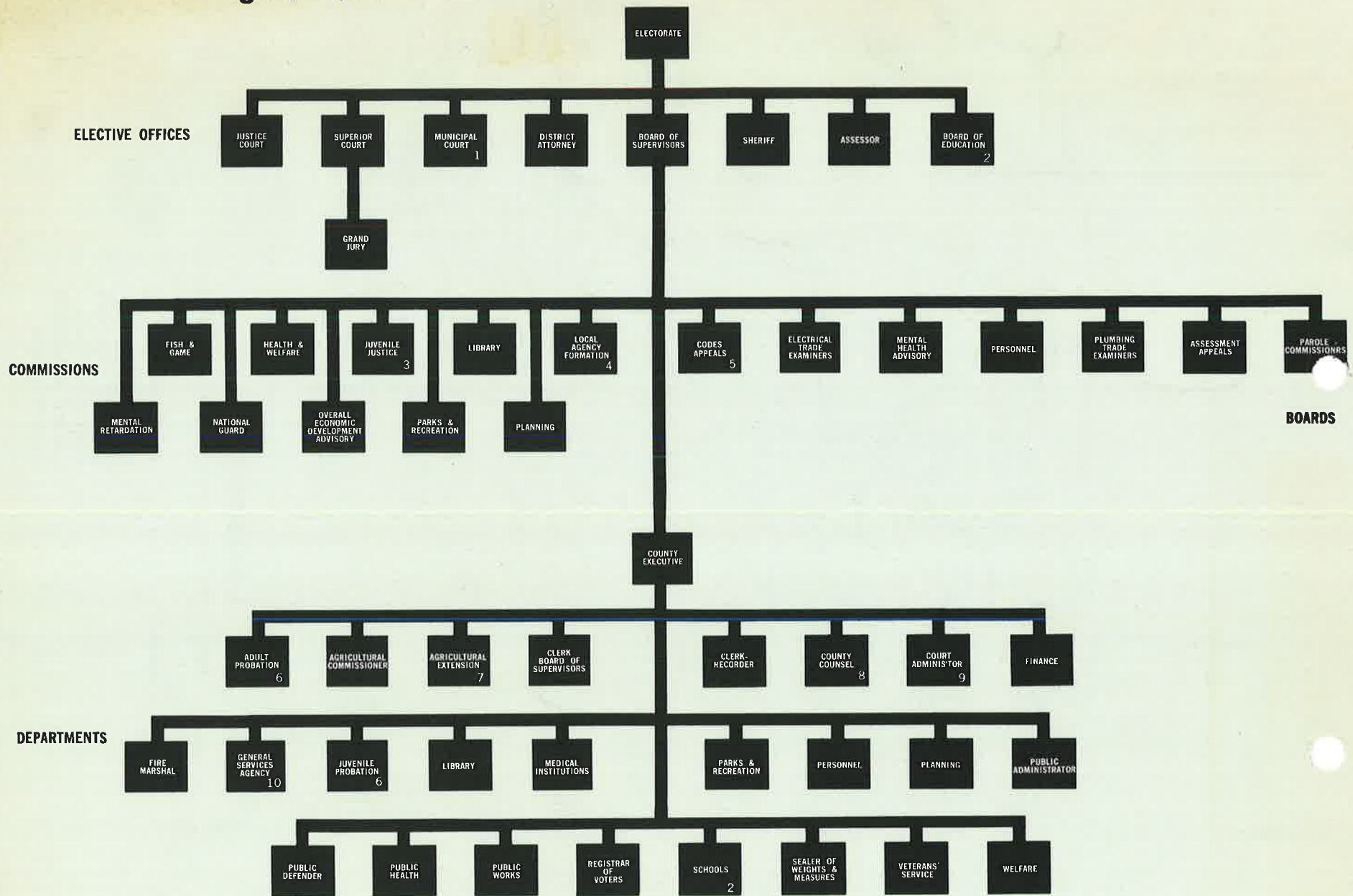
DISTRICT

1
2
3
4
5

SUPERVISOR

SIG SANCHEZ
 DOMINIC CORTESE
 CHARLES QUINN
 RALPH MEHRKENS
 VICTOR CALVO

Organization



1. Clerks appointed by Municipal Court
2. Superintendent of Schools appointed by Board of Education
3. Appointed by Superior Court; Also serves as Delinquency Prevention Commission
4. Two of five members appointed by Board of Supervisors
5. Includes Building, Electrical, Heating & Comfort Cooling, and Plumbing Codes
6. Department Heads appointed by Superior Court
7. Appointed by State
8. Appointed by Board of Supervisors
9. Appointed by Superior Court
10. Includes Building Services, Communications, Data Processing, Garage, Photography, Purchasing, and Reproduction

This bulletin is another in a series to help stimulate your interest and to help you become better informed about, your government and your elected representatives.