

County of Santa Clara

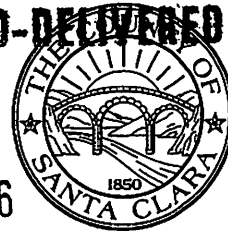
Department of Planning and Development
Planning Office

County Government Center, East Wing, 7th Floor
70 West Hedding Street
San Jose, California 95110-1705
(408) 299-5770 FAX (408) 288-9198
www.sccplanning.org

7/6/06
This item relates to:
Item # 1

BD. SUP. '06 JUN 30 PM 2:48

HAND-DELIVERED



REC'D JUL 03 2006

June 30, 2006

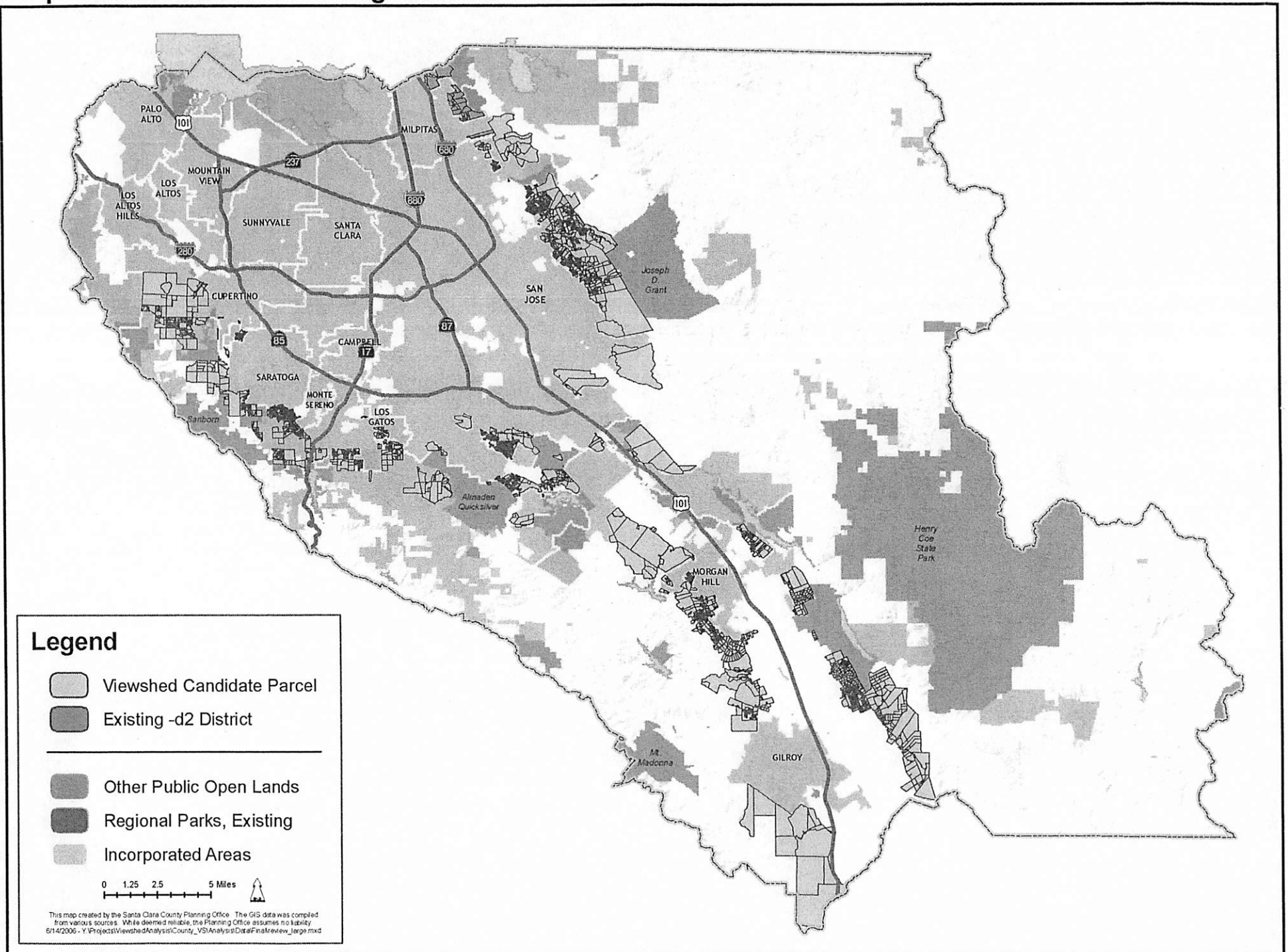
To: Santa Clara County Planning Commission

From: Bill Shoe  Principal Planner/Zoning Administrator

RE: Planning Commission Meeting – July 6, 2006
Item 1: File 8630-00-00-03CP-06GP-06Z Santa Clara County
Viewshed Protection Plan

The attached maps are an addendum to the staff report for the above item to be presented to the Planning Commission on July 6, 2006. Please review the attached maps with the staff report. The map titled "Proposed -d1 Viewshed Design Review Candidate Parcels" is listed as Attachment E in the staff report. The map titled "Current Design review Zoning Districts with Primary Viewshed" is included to facilitate your review.

Proposed -d1 Viewshed Design Review Candidate Parcels



Current Design Review Zoning Districts with Primary Viewshed

